

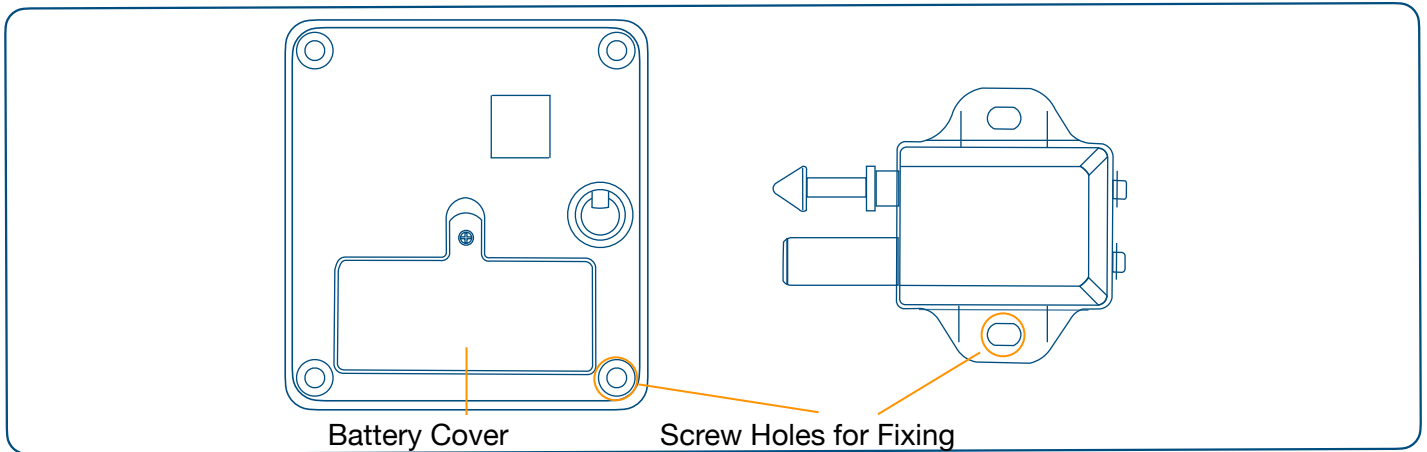
SGL-BS603 Hidden Drawer / Cabinet Lock Working with Bluetooth

Technical Specifications

Communication	Bluetooth
User Capacity	45
Operating temperature	-25°C ~+55°C
Operating Humidity Range	%5 ~%97
Available Battery Type	1 x CR123A
Battery Life	Average 1 Year
Low Battery Warning Voltage	2.4V
Very Low Battery Warning Voltage	2.2V



Introduction



Installation

Things to consider before installation

1) Before assembling the lock, insert the battery paying attention to the + and - polarity.

⚠ Reversing batteries can damage the circuit board.

2) Be sure to test the normal opening and closing of the lock without reassembling it to make sure the battery is inserted properly. Remember to close the battery cover in place.

SGL-BS603 is a lock applicable to drawers and cabinets, which can be controlled via the CabinetLock App installed on the mobile phone. For this reason, try to control the lock by phone without installing it.

Do not forget that the cabinets made of metal material will not pass the bluetooth signal inside, so make sure to try it before assembling.

1. Installing the application on a phone or tablet

1.1. Setup for iPhone and iPad (IOS)

- 1.1.1. Enter the AppStore from your phone or tablet.
- 1.1.2. Download the **CabinetLock app**.
- 1.1.3. Or show the QR code below on your phone camera.



1.2. Installation on Android phones and tablets

- 1.2.1. Download the application from your phone or tablet by tapping the link below or read the QR code below.
- 1.2.2. [Download Cabinet Lock App](#)



⚠ For installing apps outside of Google Play: "Settings>Security>Allow Unknown Sources" you have to apply the setting.

2. Usage

You can use SGL-BS603 in 2 different ways. By pressing the Scan&Unlock key and scanning the QR code that comes out of the lock's box, or by register it to the application:

- 2.1. **Using with QR Code:** A QR code sticker containing the lock's number comes out of the lock's box. When you want to open this QR code by pasting it on the drawer or cabinet, tap the Scan&Unlock button and show the QR code to the camera of your phone or tablet. The lock will open.
- 2.2. **By registering the application,** you must follow what is written below for use. Registering the application allows you to name the locks and open them from a distance of 10m. With the QR code, you must go to the place where the QR code is. Using it by registering the application will protect you from phone or tablet changes. If you download the application to your new phone or tablet and log in with your account information, the lock information will be installed on your phone or tablet. You can see it under My Cabinet.

3. App Usage:

3.1. Account Creation:

3.1.1. Tap the **Sign Up** button.

3.1.2. Enter your valid e-mail address and the password you will set in the relevant fields. Your password must be between 6 and 12 digits.

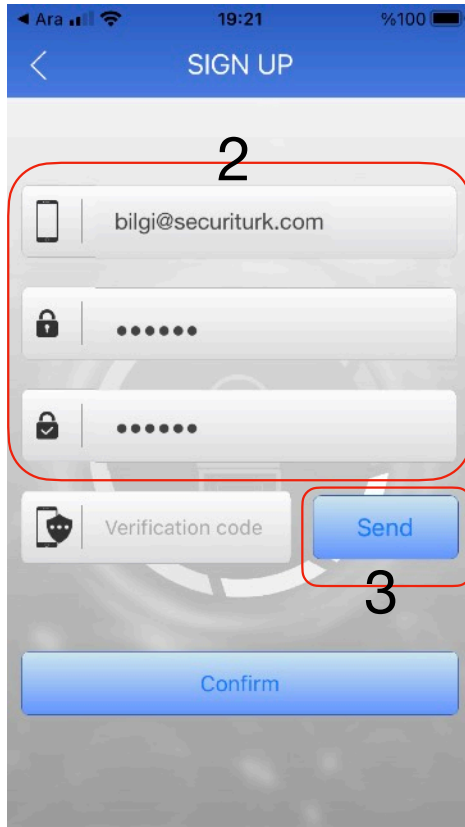
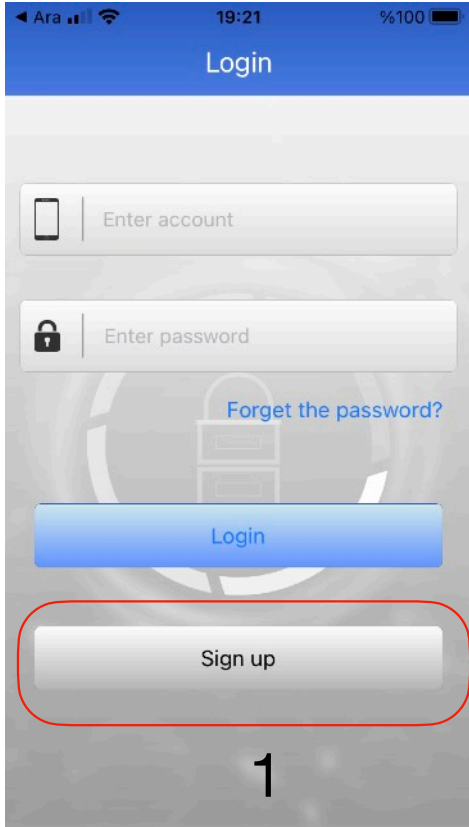
3.1.3. Tap the **Send** button.

3.1.3.1. When you see the "Send Verification Code Successfully" warning, it means that the verification e-mail has been sent to your address.

3.1.4. Enter the verification code sent to your e-mail address in the "Verification Code" field.

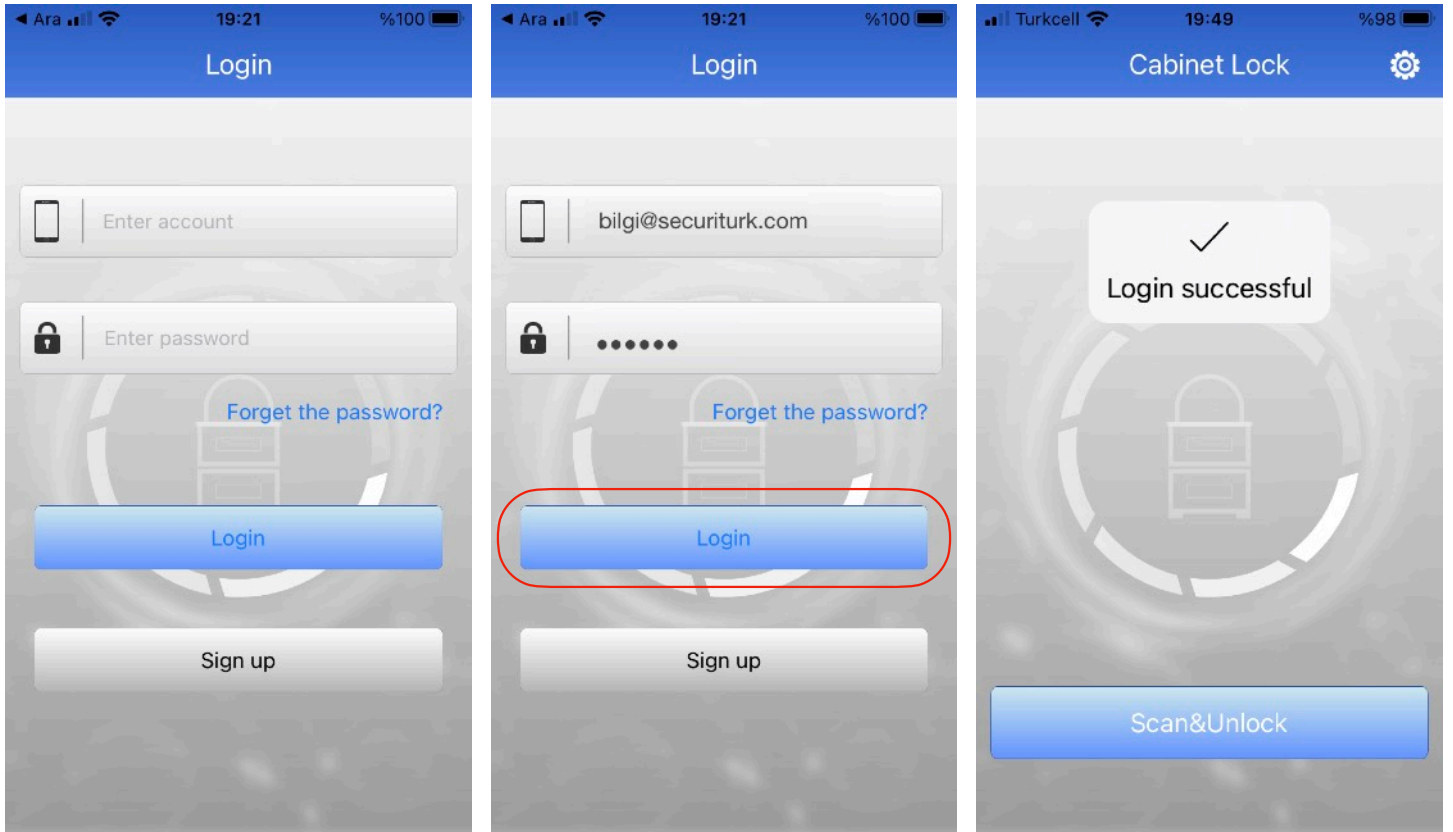
3.1.5. Tap the **Confirm** button at the bottom.

3.1.6. Your registration has been completed with the "Registration Successfully" warning.



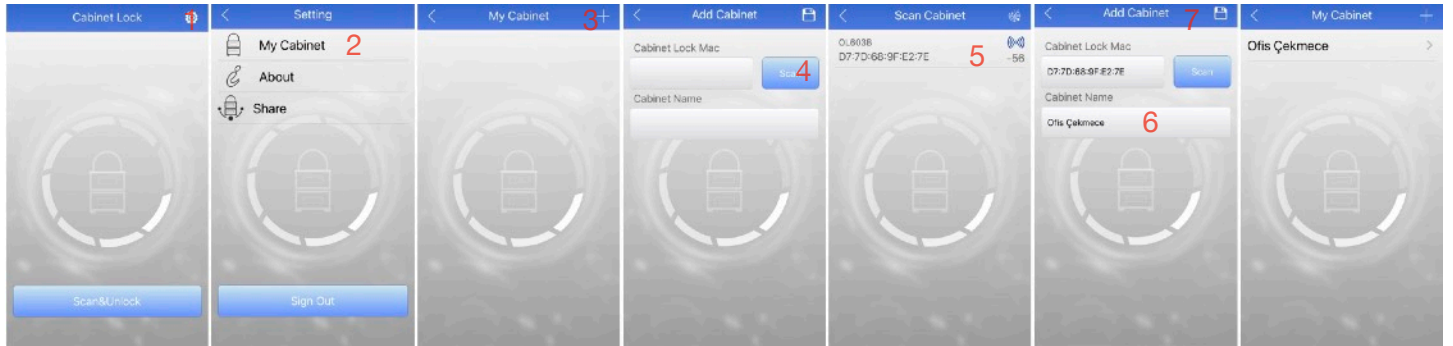
3.2.Account Login:

3.2.1.Enter your e-mail address and password on the login screen. Then tap the Login button.



Your account has been logged in.

3.3.Adding Lock to Account: Follow the steps below.



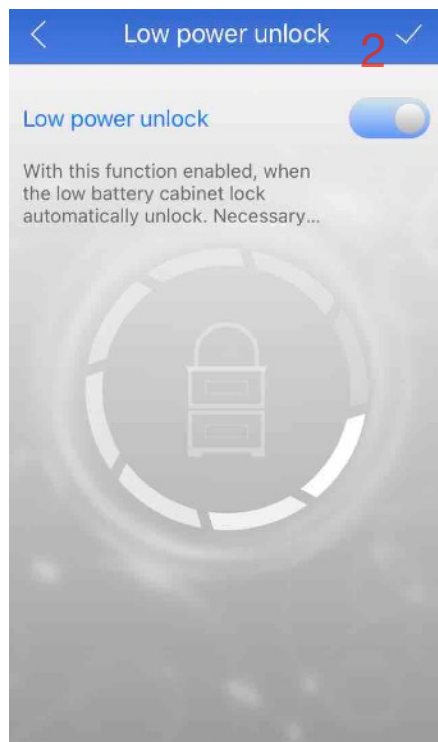
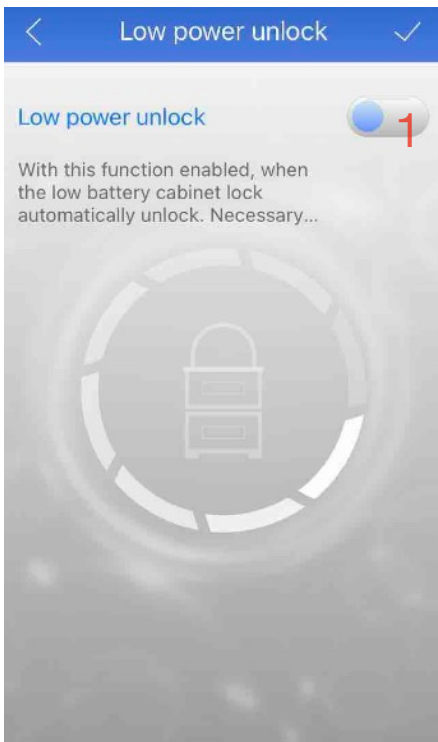
When you complete the above steps, your lock is saved under the My Cabinet section. If you want to save more than one lock, you can register new locks by tapping the + key and following the same steps.

3.4. **To unlock a lock defined for your account:** Go to My Cabinet and tap on the name you gave the lock. Tap the Unlock button on the screen that opens. The lock will open.



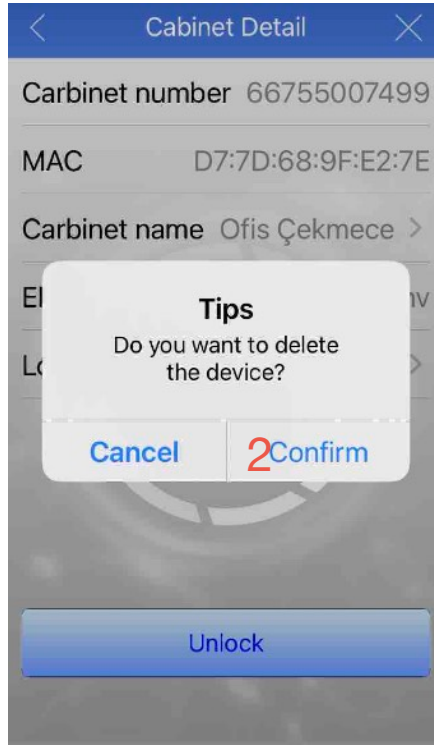
3.5. In the Electricity section of the Cabinet Detail screen, the value in milliVolts of the battery inserted in the lock is written. When this value drops below 2400, you should replace the battery.

3.6. SGL-BS603 warns the user audibly when the battery level is low. However, if you are not where the lock is, you cannot hear this sound. Therefore, you may not have knowledge about replacing the battery. In order to be protected from this situation; When you touch the area that says low power unlock, the following screen opens. If the battery runs out while you are away, you can make the unlock on by itself.



3.7. To delete a lock on your account:

Tap on the name of the lock you want to delete. The Cabinet Detail screen will open. Tap the X button here and confirm. The lock has been removed.



4. Dimensions

